

VILLAGE SURROUNDINGS

Coal mining takes place in strip mines in the Sokolov region. The biggest of them is a mine called Jiří. It is 2.5 km wide and long and its depth is over 160 m. On its bottom, there is a coal seam that is around 40 m thick. As Czech rehabilitations are unique in the world a several-kilometer long educational trail was created on Velká podkrusňohorská's spoil tip. A hedgehog guides us along the trail and at 10 stops offers us important information about the origin of the Velká podkrusňohorská's spoil tip. The spoil tip lies between the municipalities of Vinitřov, Vřesová, Lomnice, Dolní Nivy, Horní Rozmysl, Stará Chodovská. It originated by consolidating smaller spoil tips of various age during a thirty-year period on an area of 1957 ha. Its top sections rise more than 100 m above the surrounding terrain. It is the biggest spoil tip in the Czech Republic. Unlike other spoil tips that are mainly acidic, slightly alkaline cypris clay prevails in this one. The spoil tip is drained by systems which converge at the bottom of the spoil tip. After the water settles, it is released into a recipient water course. Currently, biological rehabilitation is taking place which is accompanied by tree-planting and formation of agricultural surfaces.



VŘANOV RANCH

Near Lomnice, hidden in the forest, we can find Vřanov Ranch. It was established in 2002. The herd of horses kept on the ranch was later accompanied by sheep, goats, donkeys and other animals. Riding races, themed children's camps and a motorcyclist's feast are taking place at the ranch.



MAS SOKOLOVSKO



Informační centrum 5. května 695, 356 01 Sokolov	www.sokinfo.cz info@mdtsokolov.cz	420 352 324 714
MÚ Brezová - Informační centrum Hám. Míru 230, 357 61 Brezová	www.mu-brezova.cz info@mu-brezova.cz	420 352 633 510
Informační centrum Kynšperk M. Gorkého 1/16, 357 51 Kynšperk	www.kynsperk.cz mkskynsperk.info@volny.cz	420 352 324 271
Informační centrum Chodov Hám. Míru 39, 357 35 Chodov	www.knihovnachodov.cz infocentrum@mestochodov.cz	420 352 352 260
Informační centrum Kraslice T. G. Masaryka 1762, 358 01 Kraslice	www.mtk-kraslice.cz info.krasslice@volny.cz	420 352 686 328
Informační centrum Loket T. G. Masaryka 12, 357 33 Loket	www.loket.cz infoloket@volny.cz	420 352 684 123
Městské kulturní středisko – Informační středisko Dlouhá 771, 357 31 Horní Slavkov	www.muhsstavkov.cz/mks mksstavkov@quick.cz	420 352 688 368
IC Statek Bernard Královské Poříčí Šachetní 135, 357 41 Královské Poříčí	www.statek-bernard.cz info.bernard@seznam.cz	420 352 629 722

Project Promotional campaign – Following the beauty of the LAG Sokolov region
For MAS Sokolovsko, o. p. s., produced by AgAkcent, s. r. o. © 2010

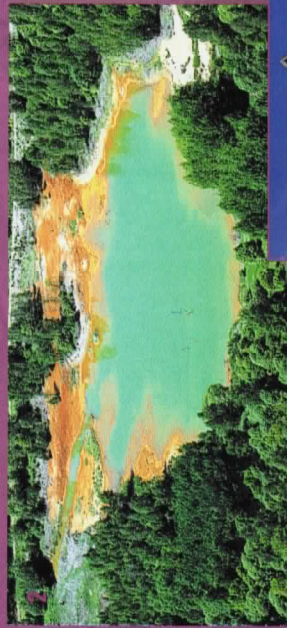
NOT FOR SALE





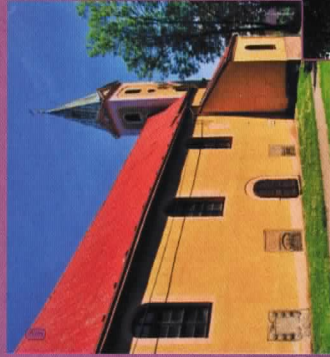
LOMNICE

Lomnice (1) is situated 4 km from Sokolov. It was established on an old Slavic settlement. The first reference to the municipality comes from 1339. Up until the end of the 19th century, the main source of living for the inhabitants was agriculture. Since the beginning of the 20th century brown coal mining was increasing and so many new working opportunities appeared. Extensive mining activity meant that not only the road from Sokolov to Kraslice, but also a part of a village called Lesík had to give way to mining. Currently, the strip mine Jirí extends into the land register of Lomnice. Coal mining caused change to the surrounding landscape. Now, an extensive rehabilitation of spoil tips is taking place on the north-western slopes behind the village. Sand-strengthened roads are being constructed that will serve tourists and cyclists after the rehabilitation is finished. Already, the roads are being used by local inhabitants (2). Various little lakes (3) are forming on the landscape and are creating a natural looking pattern.



HISTORICAL MONUMENTS AND PLACES OF INTEREST OF THE VILLAGE

A noteworthy log cabin no. 19 (4) is a cultural monument. The house is a typical example of a small rural homestead with Cheb style framed construction. The house stands on the edge of an archaeological monument of the fortified settlement Lomnice – Tyn. The mining colony (5) is a property built at the beginning of the 20th century to accommodate the miners. It was planned as a workman's colony. The residential houses, including farm buildings, were enclosed forming a communal courtyard. The Church of St. Jiljí (6) is a dominant feature in the village. It was built on the place of an original chapel, from which only a portal from the 15th century has been preserved. The church is a late gothic building from the beginning of the 15th century. Around 1580, it was touched up in renaissance style. The equipment of the church comes from the 17th century. Gravestones (7) from the second half of the 16th century were built up into the church's external wall. A monument to the victims of the First World War (8) belongs to an original group of monuments through which citizens of our towns and villages honoured the sacrifice of their fellow-citizens that died in the First World War. The baroque plague column (9) was raised in 1681 to remember the people who died of the plague in 1633. The Culture House (10) was built in the 1960s. At the same time, new residential houses (11) were built in the municipality's section of Tyn. The local school was extended by addition of another building.



PRESENCE OF THE MUNICIPALITY

In the 1980s a new school canteen, a ceremonial hall and grocery store were built. Development of family houses continued in the next decade. A new wastewater treatment plant was built and new sewer and gas distribution systems were built for the entire territory of the municipality. A house with small-scale flats was built for senior citizens. The buildings of the primary school and kindergarten were renovated. Also the square and many houses and buildings, including the town hall (12) underwent renovation. Currently, another housing development is under construction and reconstructions of water mains are continuing and other activities to improve the look of the village are being planned.

In 2008, Lomnice won first place in the regional competition and became the Village of the year in the Karlovy Vary region. The village offers to its inhabitants the services of a general practitioner for children and adults, a local library located on the ground floor of the municipal office, a post office, a primary school and a kindergarten. A model aeroplane club operates in two separate fields for the players. A new skittle alley has been built in the Culture House. A multi-purpose sports ground (13) is open to the public and football, tennis, volleyball, basketball, tennis and handball are the sports most played there. It is used by children and adults alike.